



iData T2 UHF

High-performance RFID Terminal

Serve purposes of fast-growing business

iData T2 UHF is a 4G high-performance RFID terminal with efficient RFID reading capability and 4G communication capability, which can meet the needs of rapid business growth of enterprises for equipment performance. It improves the efficiency of workers and help enterprise to cope with future challenges confidently.

Efficient RFID reading, designed for business

The tag reading rate is faster than 700 tags/s, which can help workers save 40% of their time and complete their work faster when dealing with massive inventory work.

4G WWAN makes operations smoother

The device adopts 4G WWAN. After the worker completes the reading, the information can be uploaded to the system quickly, and the loading time can be shortened querying the information.

Dynamic duty cycle algorithm to optimize the efficiency

The dynamic duty cycle algorithm will regularly estimate the number of tags in the surrounding environment, dynamically adjust the running time of the RFID module, extend the battery life and lifespan of the module.



Inbound and outbound
Management



Production
management



Fixed asset
management



Public
management

T2 UHF (4G) Technical Specifications

System Configuration

Processor	Octa-core 2.0GHz high-performance processor
Operating System	Android 12.0 (GMS)
Memory (ROM+RAM)	64GB + 4GB (standard), 128GB+6GB(optional)
SIM	Two out of three SIM card slots, dual SIM and dual standby * Two out of three SIM card slots: two cards can be held at the same time, Nano SIM card + Nano SIM card / Nano SIM card +TF card
Expansion Slot	Micro SD card (up to 256 GB)
Display Screen	6.21-inch, resolution: 1520*720 pixels
Touch Screen	Industrial capacitive screen, support wet-hand operation/glove mode/multi-touch/gesture operation
Camera	16 megapixels top camera, support auto-focus/PDAF, 5 megapixels front camera;
Flashlight	800mA flashlight
Keypad	6 keypads in total: scan key *2, power key *1, volume key*2, pistol trigger *1
Battery	Main unit: 3.85V lithium battery, with 4500mAh, embedded Pistol grip: 3.6V lithium battery, with 6700mAh, detachable *Execution standard: GB31241-2022
Audio	Built-in microphone
Charging Method	Type-C and Pin-port charging, support 18W fast charging
Reminder	Vibration reminder/LED reminder/high power speaker/Audio reminder
Vibrating Motor	Built-in vibrating motor
Sensors	G-sensor/Proximity sensor/Light sensor/Geomagnetic sensor/ Gyroscope
Intercom Function (optional)	Support one-button PTT calls
Cooling fan (optional)	Built-in cooling fan

Structure Parameter

Dimension (L*W*D)	168mm*79mm*145mm (shield width 97mm)
Weight	691.5 g (including the battery)

Environmental Parameter

Working Temperature	-20°C - 55°C *Do not charge under low temperature conditions for the safety concerns
Storage Temperature	-40°C - 70°C
Humidity	0 - 95% (no moisture condensation)
Drop Specification	Multiple drops to concrete floor from the height of 1.5m
Roller Drop Specification	1000 times of roller drops from a height of 0.5 meter
Ingress Protection	IP67
ESD Protection	±15KV (air discharge), ±8KV (contact discharge)

Communication Interface

USB Interface	Type-C (with headset function) *1
OTG Interface	Support
PSAM (optional)	Support PSAM*1

Scanning Engine

Barcode Type	It can scan one-dimensional / two-dimensional barcodes
Scanning Accuracy	≥3.33mil
Scanning Angle	Pitch: ±70°; Skew: ±60°; Tilt: 360°
View Angle	Horizontal: 45°, Vertical: 29.5°, Diagonal: 50°
Motion Error Tolerance	8m/s

Communication Transmission

WWAN (Network Frequency)	China & Eurasian version: 2G: B2/B3/B5/B8 3G: WCDMA: B1/B5/B8, CDMA BC0, TD-SCDMA: B34/B39 4G: FDD-LTE: B1/B3/B5/B7/B8/B20, TDD-LTE: B34/B38/B39/B40/B41
WWAN (Data Service)	GSM/GPRS/EDGE/CDMA/UMTS/HSPA/HSPA+/EVDO/WCDMA/TD-SCDMA/TDD-LTE/FDD-LTE
WLAN Function	Wi-Fi 802.11a/b/g/n/ac/d/e/h/i/j/k/r/v/w (2.4G dual-band Wi-Fi), support fast roaming
Bluetooth	Bluetooth 5.0
GPS	GPS/AGPS/BDS/Galileo/GLONASS/QZSS

UHF RFID

Communication Protocol	ISO18000-6C/EPC Class1 Gen2 V2, Support Gen2X
Frequency	920MHz~925MHz/902MHz~928MHz/865MHz~868MHz
Output Power	5~33dbm
Antenna	Circularly polarized antenna
Reading Distance	Up to 30m
Reading Rate	Up to 700tags/s

NFC(Optional)

Frequency	13.56MHz
Reading distance	Within 60mm
Communication protocol	ISO14443A/14443B/15693

Development Support

Programming Language	Java
Development API	iScan API (Scanning Development Kits), Device API (Device Management/Configuration Development Kits), Android Standard Interface
Development Tool	Eclipse/Android Studio

Accessories (More details in accessories guide)

Standard Accessories	USB cable*1, power adapter*1
Optional Accessories	Single charging cradle, 2-in-1 charging cradle, 4-slot charging cradle, 2-slot battery charging cradle, protective film, hand strap

The information of iData products and software service may be subject to change without notice. Please contact your iData sales representative for the latest details.



Official Website

WUXI IDATA TECHNOLOGY CO., LTD.

Address: Floor 11, Building B1, Wuxi (Binhu) National Sensing Information Center,

No.999 Gaolang East Road, Wuxi City, Jiangsu Province ,P.R.C.

E-mail: sales@idataglobal.com

Website: www.idataglobal.com

Each product comes with a pack of practical and cost-effective accessories

USB Cable

Type-C to USB cable, 1m in length, support charging and data transmission



CHA-USBC-GNR

Battery

6700mAh, detachable design

ps: every product comes with 1 unit, you can purchase extra unit

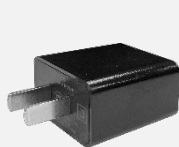


CHA-BTRY-T2 UHF-6700MA

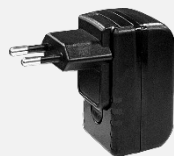
Power Adapter

Input voltage 100-240V, output 5V2A. Support plug types of China/Europe/UK/US/Australia, match with CHA-USBC-GNR

ps: you may have one of the power adapters



CHA-PWAD-GNR-5V2A-CN



CHA-PWAD-GNR-5V2A-EU



CHA-PWAD-GNR-5V2A-UK



CHA-PWAD-GNR-5V2A-US



CHA-PWAD-GNR-5V2A-AU

Improve management efficiency of devices and operational level of enterprises

Single Charging Cradle

Support charging for 1 main unit. Support plug types of China/Europe/UK/US/Australia

ps: you may have one of the power adapters as below



CHA-CRD1S-T2 UHF

2-slot Battery Charging Cradle

Support maximum charging of 2 batteries of pistol grip at the same time. Support plug types of China/Europe/UK/US/Australia

ps: you may have one of the power adapters as below



CHA-CRD2B-T2 UHF

2-in-1 Charging Cradle

Support maximum charging of 1 main unit+1 battery at the same time. Match with multifunctional 5-slot base. Support plug types of China/Europe/UK/US/Australia

ps: power adapter will be compatible with designated standard



CHA-BTC21-T2 UHF

4-slot Charging Cradle

Constituted by 4 CHA-CRD1S-T2 UHF, support maximum charging of 4 main units at the same time. Support plug types of China/Europe/UK/US/Australia

ps: you may have one of the power adapters



CHA-CRD4S-T2UHF

The information of iData products and software service may be subject to change without notice. Please contact your iData sales representative for the latest details.



Official Website

WUXI IDATA TECHNOLOGY CO., LTD.

Address: Floor 11, Building B1, Wuxi (Binhu) National Sensing Information Center,
No.999 Gaolang East Road, Wuxi City,Jiangsu Province ,P.R.C.

E-mail: sales@idataglobal.com

Website: www.idataglobal.com

T2 UHF Optional Accessories for Portability

Accessories Guide

Improve device portability and comfort for users, boost working efficiency

Hand Strap

Wear on your wrist to carry the device, avoid accidental drops, and assure the safety of equipment



MNT-HS-GNR

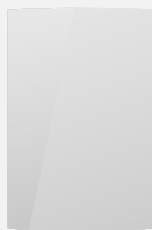
T2 UHF Optional Accessories for Protection

Accessories Guide

Lower risks of malfunction during usage, extend lifespan of devices

Protective Film

Protective film for touchscreen. It can protect the screen from cracking or being scratched in case there's any accidental drops or impact during usage



PRT-PTF-T2

The information of iData products and software service may be subject to change without notice. Please contact your iData sales representative for the latest details.



Official Website

WUXI IDATA TECHNOLOGY CO., LTD.

Address: Floor 11, Building B1, Wuxi (Binhu) National Sensing Information Center,

No.999 Gaolang East Road, Wuxi City, Jiangsu Province, P.R.C.

E-mail: sales@idataglobal.com

Website: www.idataglobal.com

4-slot Charging Cradle

Constituted by 4 CHA-CRD1S-T2 UHF, support maximum charging of 4 main units at the same time. Support plug types of China/Europe/UK/US/Australia

ps: you may have one of the power adapters



CHA-CRD4S-T2UHF

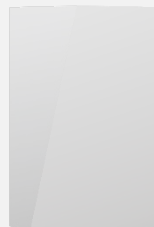
T2 UHF Optional Accessories for Protection

Accessories Guide

Lower risks of malfunction during usage, extend lifespan of devices

Protective Film

Protective film for touchscreen. It can protect the screen from cracking or being scratched in case there's any accidental drops or impact during usage



PRT-PTF-T2

The information of iData products and software service may be subject to change without notice. Please contact your iData sales representative for the latest details.



Official Website

WUXI IDATA TECHNOLOGY COMPANY LTD.

Address: Floor 11, Building B1, Wuxi (Binhu) National Sensing Information Center,

No.999 Gaolang East Road, Wuxi City, Jiangsu Province, P.R.C.

E-mail: sales@idataglobal.com

Website: www.idataglobal.com