



iData T1

Enterprise-level Smart Terminal

Thin, durable and portable, multifunctional working assistant

iData T1 is a new generation of enterprise-level smart terminals, with similar appearance and touch feeling to smart phones. In addition, the performance and reliability of the device surpass smart phones and reach enterprise-level standards. Whether employees are in the warehouse or fieldwork outdoors, they can always rely on this portable multifunctional terminal.

"Thin" yet "strong "

The 5.5-inch full-screen light and thin PDA can be held in one hand. The appearance and feel are similar to smartphones. With the help of the Android system, employees can start work without training. The 1.5-meter drop-resistant, IP68 dust-proof and waterproof, make the device ultra-rugged quality to survives accident drops and bad weather outdoors.

Enterprise-level data collection capabilities

The powerful scanning engine can quickly capture almost any 1D/2D barcode, even if the barcode is damaged or contaminated. The 13-megapixel rear camera can clearly take photos of goods, receipt documents, etc.

Improve team capabilities with enterprise-grade software

By using iTalk, employees can communicate via voice call with Wi-Fi network and connect your team efficiently. Enterprise-level scanning software iScan Pro and text recognition software iWord enables employees to scan multiple barcodes, and extract text from any forms quickly.



Store Management



Inventory management



E-commerce shipment



Production management

T1 Technical Specifications

System Configuration

Processor	Octa-core 2.0GHz high-performance processor
Operating System	Android 10.0 (GMS)
Memory (ROM+RAM)	64GB + 4GB (standard)
SIM (eSIM: Not supported)	Two out of three SIM card slots, support dual SIM and dual standby Two out of three SIM card slots: two cards can be held at the same time, Nano SIM card + Nano SIM card /Nano SIM card +TF card WIFI ONLY version : SIM not available, not supported
Expansion Slot	Micro SD card (up to 256 GB) WIFI ONLY version: Expansion slot not available
Display Screen	5.5-inch, resolution: 1440*720 pixels
Touch Screen	Industrial capacitive screen, support wet-hand operation/glove mode/multi-touch/gesture operation
Camera	13MP rear camera, support auto-focus/PDAF, 5MP front camera
Flashlight	800mA flashlight
Keypad	3 keypads in total: side scan key *2, side power key *1
Battery	3.85V lithium battery, with 5000mAh, undetachable
Audio	Built-in dual microphone (noise-canceling microphone)
Charging Method	Type-C charging and pin port charging, support 10W fast charging
Reminder	Vibration reminder/LED reminder/Audio reminder
Fingerprint Recognition (Optional)	Support back fingerprint recognition
Vibrating Motor	Built-in vibrating motor
Sensors	G-sensor/ Proximity sensor/Light sensor
Intercom Function (Optional)	Support one-button PTT calls

Structure Parameter

Dimension (L*W*D)	157mm*74mm*13.6mm
Weight	230g (including the battery)

Environmental Parameter

Working Temperature	-20°C - 60°C *Do not charge under low temperature conditions for the safety Concerns
Storage Temperature	-40°C - 60°C (without the battery)
Humidity	0 - 95% (no moisture condensation)
Drop Specification	Multiple drops to concrete floor from the height of 1.5m
Roller Drop Specification	1000 times of roller drops from a height of 0.5 meter
Ingress Protection	IP68
ESD Protection	±15KV (air discharge), ±8KV (contact discharge)

Accessories (More details in accessories guide)

Standard Accessories	USB cable*1, hand strap *1, power adapter*1
Optional Accessories	Single charging cradle, 4-slot charging cradle, fanny pack, protective case, protective film

Scanning Engine

Barcode Type	It can scan one-dimensional / two-dimensional barcodes
Scanning Accuracy	≥3.33mil
Scanning Angle	Pitch: ±60° ; Skew : ±45° ; Tilt : 360°
View Angle	Horizontal : 44.3° , Vertical : 28.4° , Diagonal : 51°
Motion Error	8m/s
Tolerance	

Communication Transmission

WWAN (Network Frequency)	2G: B2/B3/B5/B8 3G: WCDMA: B1/B5/B8, CDMA&EVDO: BC0, TD-SCDMA: B34/B39 4G: FDD-LTE: B1/B3/B5/B7/B8/B20 , TDD-LTE: B34/B38/B39/B40/B41 WIFI ONLY version : SIM not available, not supported
WWAN (Data Service)	GSM/GPRS/EDGE/CDMA/UMTS/HSPA/HSPA+/EVDO /WCDMA/TD-SCDMA/TDD-LTE/FDD-LTE WIFI ONLY version : SIM not available, not supported
WLAN Function	Wi-Fi 802.11a/b/g/n/r/ac (2.4G + 5G dual-band Wi-Fi), support Wi-Fi 5G PA amplifier
Bluetooth	Bluetooth 5.0, support BLE
GPS	GPS/AGPS/BDS/Galileo/GLONASS/QZSS

Working Frequency	13.56 MHz
Reading Distance	Within 30 mm
Communication Protocol	ISO14443A/14443B/15693

Development Support

Programming Language	Java
Development API	iScan API (Scanning Development Kits), Device API (Device Management/Configuration Development Kits), Android Standard Interface
Development Tool	Eclipse/Android Studio

Communication Interface

USB Interface	Type-C (with headset function) *1
OTG Interface	Support

The information of iData products and software service may be subject to change without notice. Please contact your iData sales representative for the latest details.



Official Website

WUXI IDATA TECHNOLOGY COMPANY LTD.

Address: Floor 11, Building B1, Wuxi (Binhu) National Sensing Information Center,
No.999 Gaolang East Road, Wuxi City,Jiangsu Province ,P.R.C.

E-mail: sales@idataglobal.com

Website: www.idataglobal.com

Each product comes with a pack of practical and cost-effective accessories**USB Cable**

Type-C to USB cable, 1m in length, support charging and data transmission



CHA-USBC-GNR

Hand Strap

Wear on your wrist to carry the device, avoid accidental drops, and assure the safety of equipment

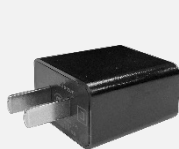


MNT-HS-GNR

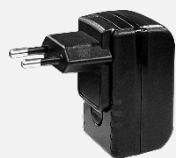
Power Adapter

Input voltage 100-240V, output 5V2A. Support plug types of China/Europe/UK/US/Australia, match with CHA-USBC-GNR

ps: you may have one of the power adapters



CHA-PWAD-GNR-5V2A-CN



CHA-PWAD-GNR-5V2A-EU



CHA-PWAD-GNR-5V2A-UK



CHA-PWAD-GNR-5V2A-US



CHA-PWAD-GNR-5V2A-AU

T1 Optional Accessories for Charging**Improve management efficiency of devices and operational level of enterprises****Single Charging Cradle**

Support charging for 1 main unit. Support plug types of China/Europe/UK/US/Australia

ps: you may have one of the power adapters

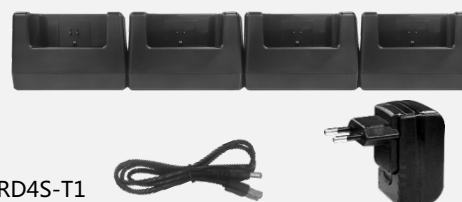


CHA-CRD1S-T1

4-slot Charging Cradle

Constituted by 4 CHA-CRD1S-T1, support maximum charging of 4 main units at the same time. Support plug types of China/Europe/UK/US/Australia

ps: you may have one of the power adapters



CHA-CRD4S-T1

T1 Optional Accessories for Portability

Accessories Guide

Improve device portability and comfort for users, boost working efficiency

Fanny Pack

Used to carry main units and other accessories. Can be tied to the waist or used as a crossbody bag



MNT-FP-GNR

T1 Optional Accessories for Protection

Accessories Guide

Lower risks of malfunction during usage, extend lifespan of devices

Protective Film

Protective film for touchscreen. It can protect the screen from cracking or being scratched in case there's any accidental drops or impact during usage



PRT-PTF-T1

Protective Case

Protective case for the main unit. It can prevent the malfunction of main unit in case there's any accidental drops or impact during usage



PRT-PTC-T1

The information of iData products and software service may be subject to change without notice. Please contact your iData sales representative for the latest details.



Official Website

WUXI IDATA TECHNOLOGY COMPANY LTD.

Address: Floor 11, Building B1, Wuxi (Binhu) National Sensing Information Center,
No.999 Gaolang East Road, Wuxi City, Jiangsu Province, P.R.C.

E-mail: sales@idataglobal.com

Website: www.idataglobal.com